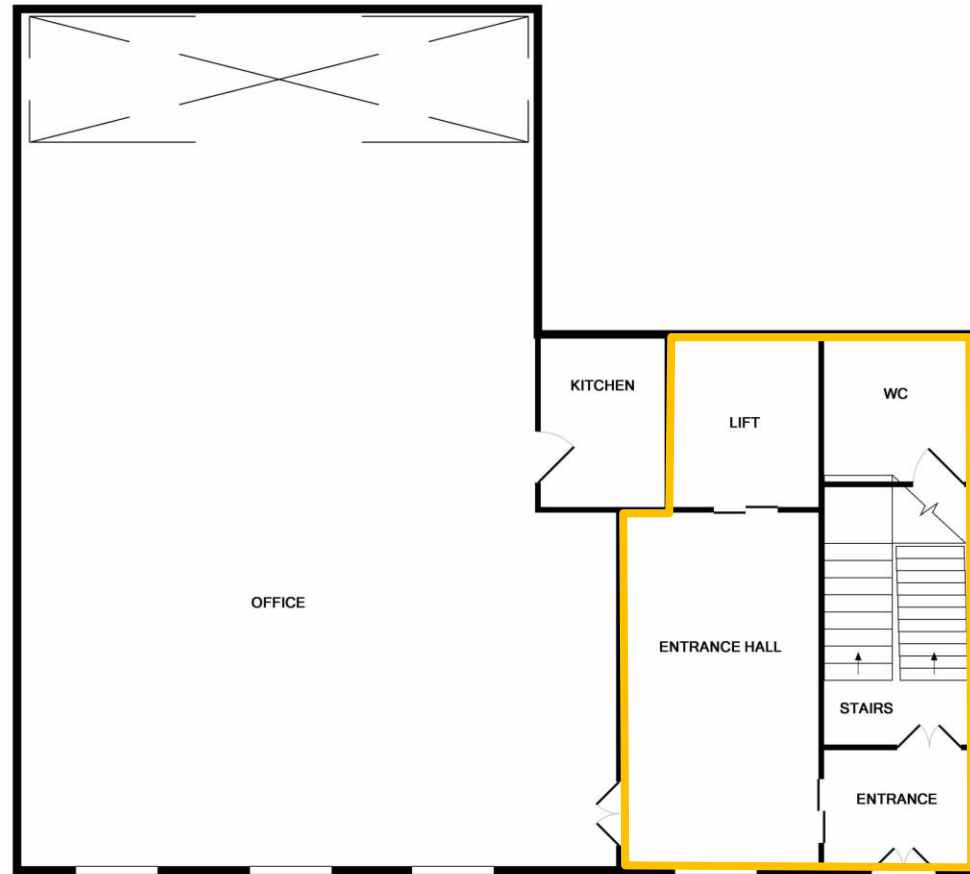


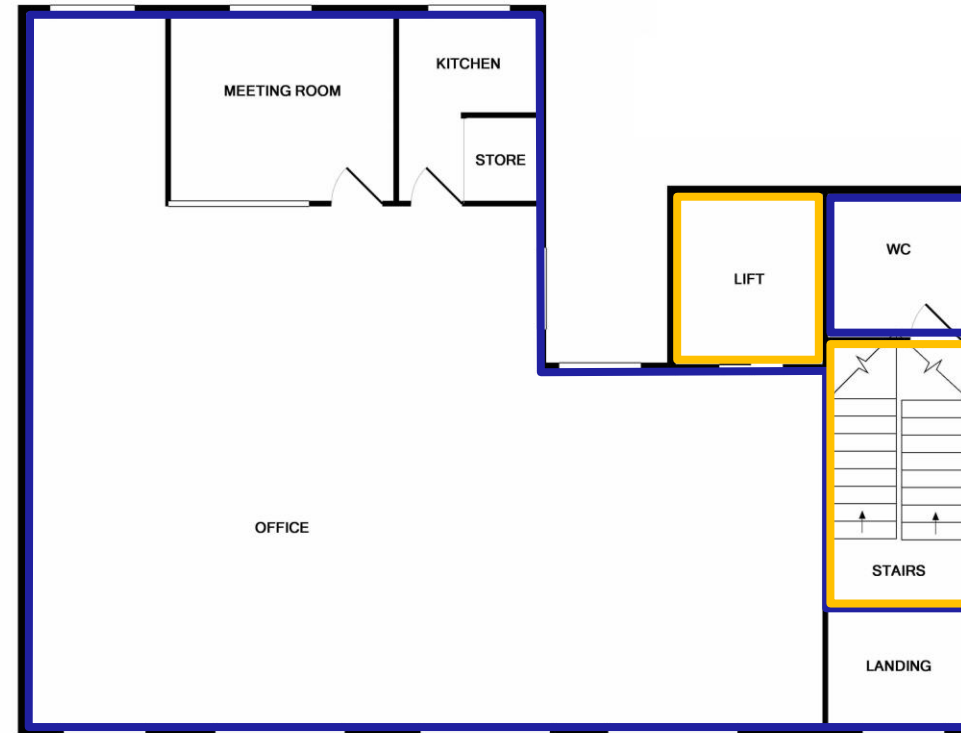
Lease Plan

First Floor Office Unit
 Albion Mills
 18 East Tenter Street
 LONDON
 E1 8DN



Ground Floor

Exit to
 East Tenter Street



1st Floor



Scale



1st Class Energy Ltd



1st Class Energy Ltd

28 Lords Meadow
 Redbourn
 Herts
 AL3 7BX

Drawn: Glen Baynes
 T: 01582 793525

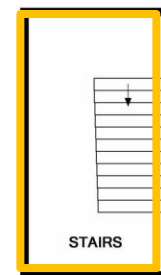
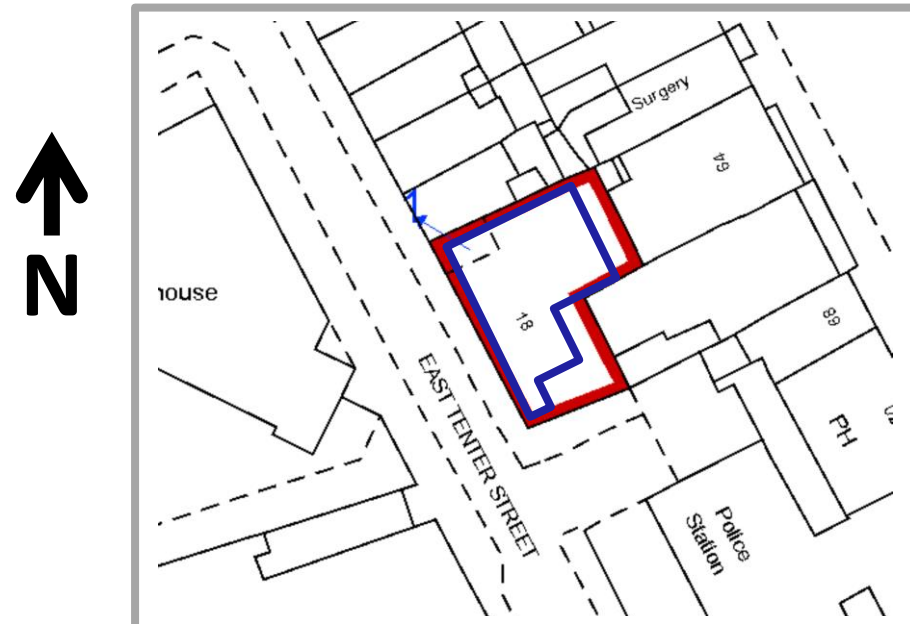
info@1stclassenergy.com

www.1stclassenergy.com

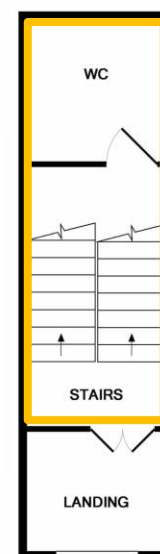
© 1st Class Energy Ltd

SITE Plan Scale 1:250 when printed at A3. Check printer parameters

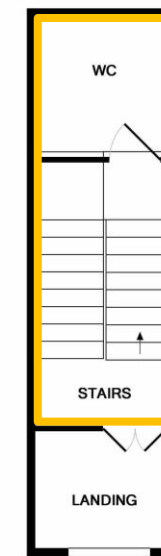
Location Plan: Scale 1:1250



Basement



2nd Floor



3rd Floor

Legend

- Red Edged Outline of Building and Land of Property Title Number TQ3381SE
- Blue Edged Outline of Demised Leased Premises (within First Floor) Albion Mills: 18 East Tenter Street LONDON E1 8DN
- Yellow Edged Outline: Communal and shared space