

NOTES

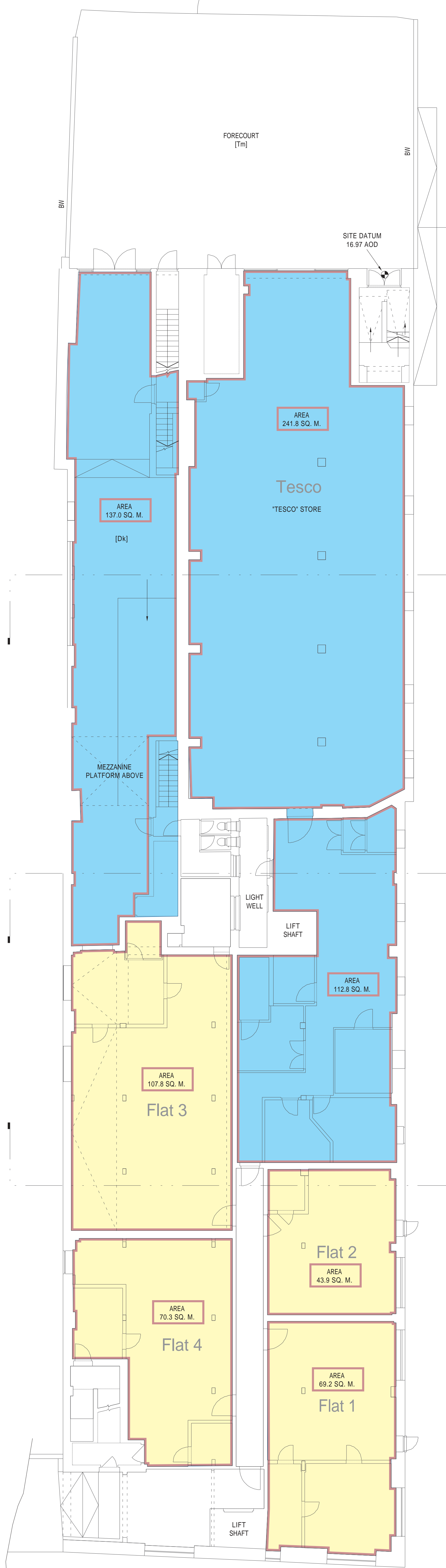
- ALL CRITICAL MEASUREMENTS MUST BE CHECKED & VERIFIED
- ANOMALY CONTROL: SOME LINES, WHERE INDICATED, ARE DERIVED FROM ORDINANCE SURVEY 1:500 MAPS. NO. 1030868. ALL 25 DATUM POINTS SHOWN HAVE BEEN POSITIONED BY MEANS OF A BEST FIT OVERLAY.
- VERTICAL CONTROL: ALL LEVELS ARE RELATED TO ORDINANCE SURVEY DATUM. SEE DATUM LOCATED ON THRESHOLD OF DALSTON HOUSE. SEE SITE SURVEY 1, GROUND FLOOR, DRAWING 2015.11.

LEGEND

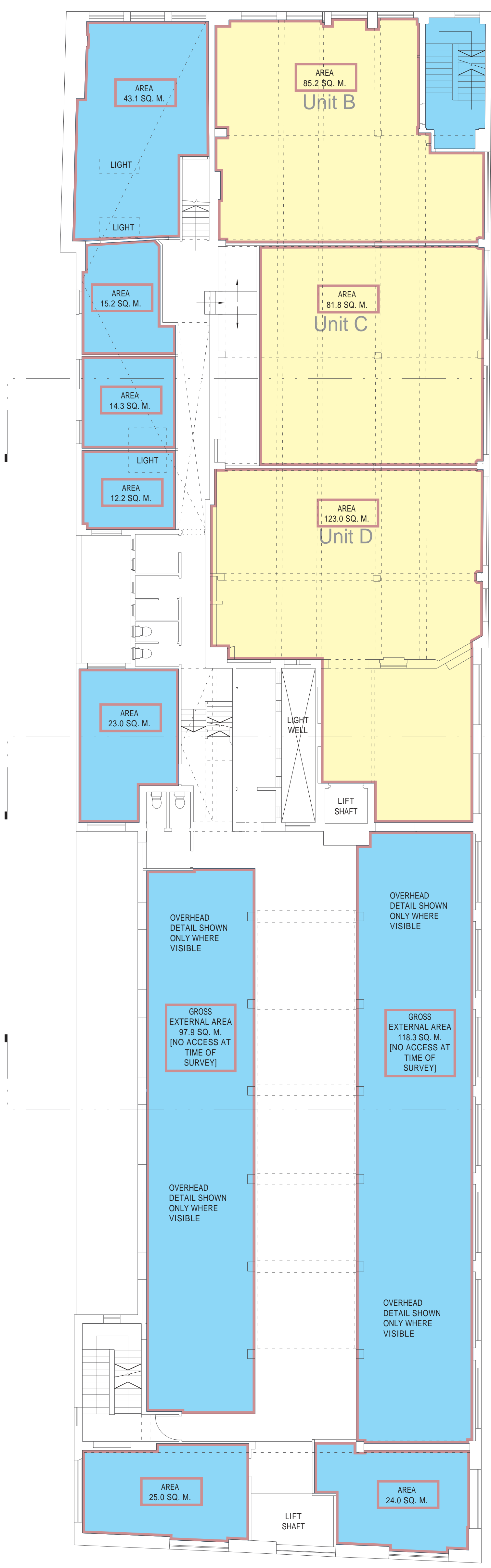
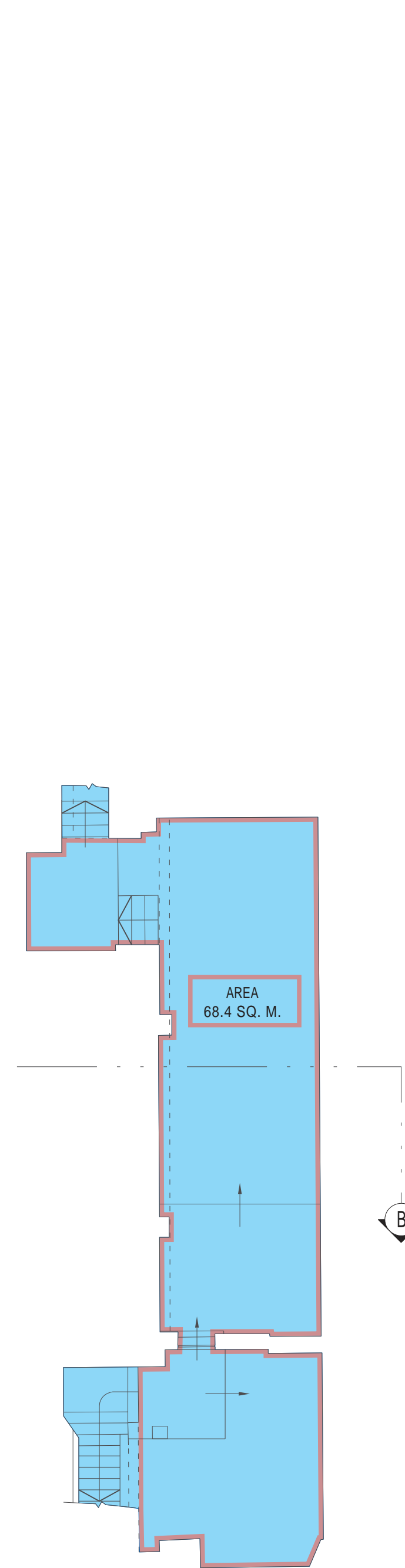
- COMMERCIAL UNITS
- RESIDENTIAL UNITS
- AREAS

LINE

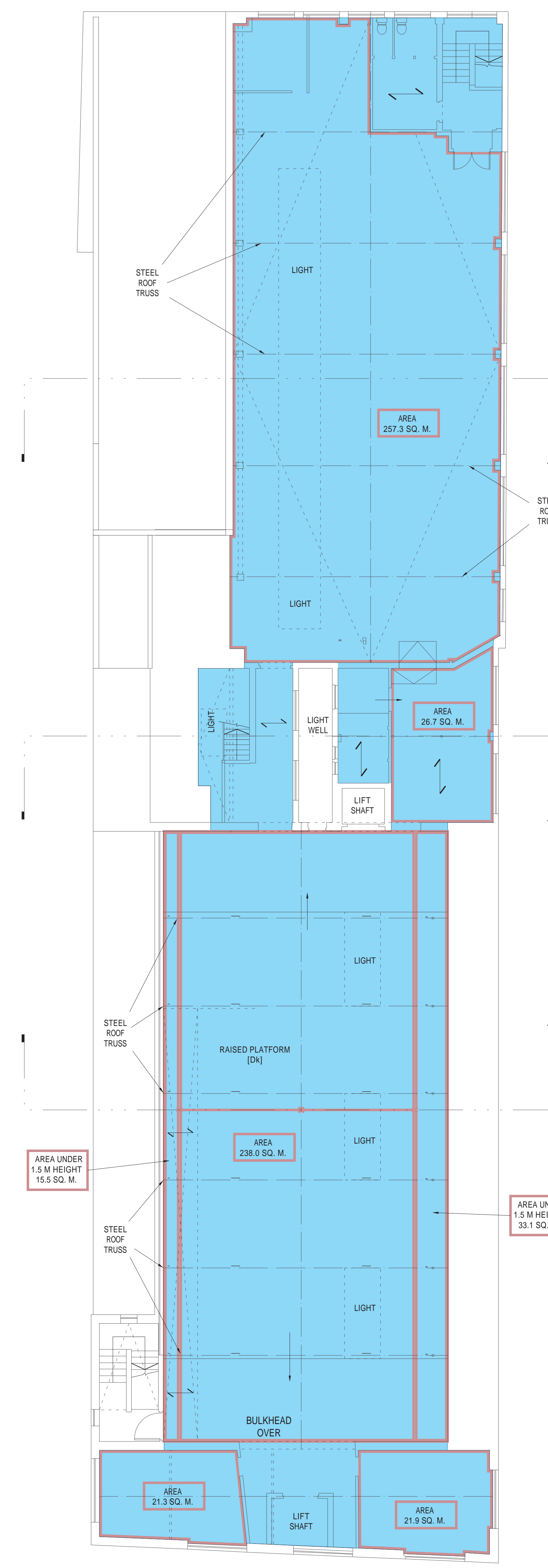
- STRUCTURE (SOLID)
- OVERHEAD FEATURES, PROJECTIONS, SHIFTS, SHALLOTTES (DASH AND DOTTED)
- DETAIL (SHORT DASHES)
- CENTRE LINES (DASH AND DOT)
- APPROXIMATE ALIGNMENT (DOT)
- ORIGNAL LINES (LONG AND SHORT DASHES)
- BARRELS (DOTTED)
- DIRECTION OF FLOOR OR CEILING JOISTS
- WALLS (SOLID OR DOTTED), OR FOR SCOPE (DOTTED)
- DASHES BY FLOOR LEVEL, LAYOFF TO LOWER FLOOR, BARRELS (DOTTED LINE TO CORNER POINT)
- MEZZANINE FEATURES
- ROOF FEATURES NOT EXTENDING TO CEILING LEVELS (DASHES)



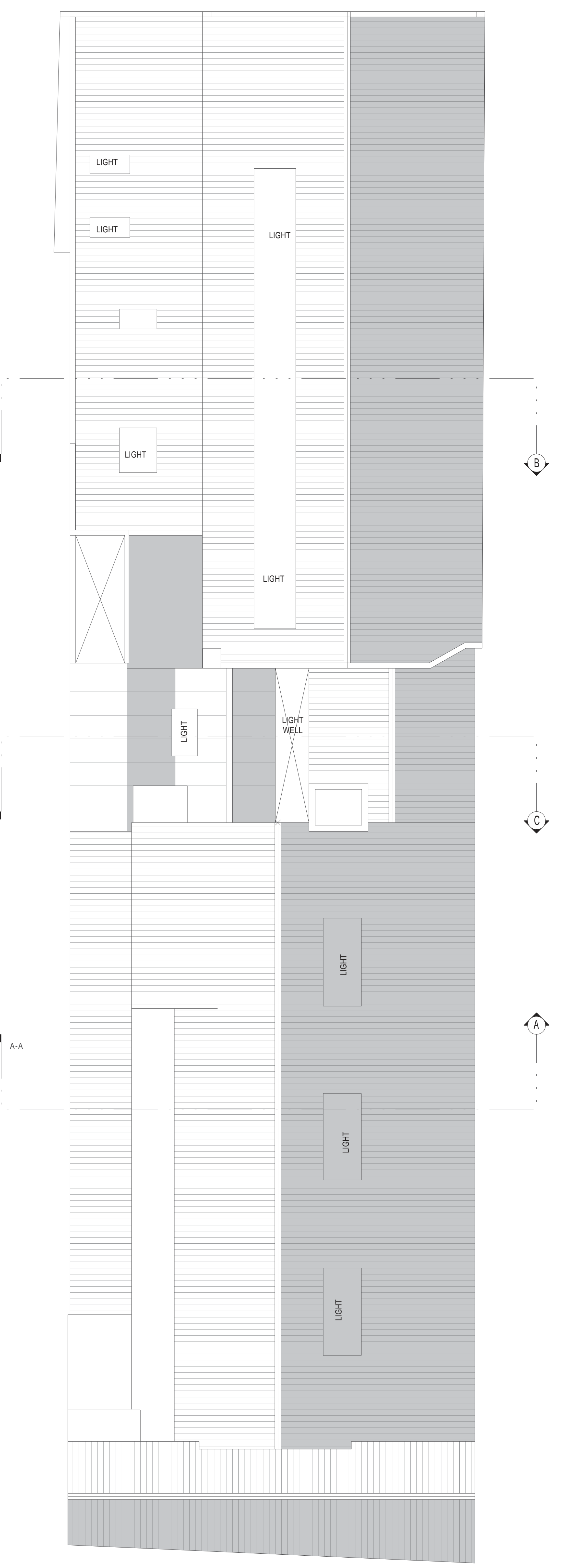
Basement



1st. floor



2nd. floor



Roof